

Can Transition Dynamics Explain the International Output Data?*

Chris Papageorgiou
Department of Economics
Louisiana State University
Baton Rouge, LA 70803
cpapa@lsu.edu

Fidel Perez-Sebastian
Dpto. F. del Análisis Económico
Universidad de Alicante
03690 Alicante, Spain
fidel@merlin.fae.ua.es

January, 2003

Abstract

This paper studies the transition dynamics predictions of an R&D-based growth model, and evaluates their performance in explaining income disparities across nations. We find that the fraction of the observed cross-country income variation explained by the transitional dynamics of the model is as large as the one accounted by existing steady-state level regressions. Our results suggest that the traditional view of a world in which nations move along their distinct balanced-growth paths, is as likely as the one in which countries move along adjustment paths toward a common (very long-run) steady state.

JEL Classification: F43, O41, O47.

*We thank Craig Burnside, Jordi Caballe, Emilio Domínguez, Theo Eicher, John Duffy, Theodore Palivos, Pietro Peretto, Pete Klenow, Tomoya Sakagami, two anonymous referees, and seminar participants at the 6th International Conference of the Society of Computational Economics, Universitat Pompeu Fabra, Barcelona, 2000, the Simposio de Análisis Económico, Universitat Autònoma de Barcelona, 1999, the International Conference in Economic Growth, Academia Senica, Taipei, 1999, the 69th Southern Economic Association meetings, New Orleans, 1999, and the Midwest Macro Conference, University of Pittsburgh, 1999, for helpful comments and suggestions. All remaining errors are ours. Financial support from Instituto Valenciano de Investigaciones Económicas and Spanish Ministry of Science and Technology, BEC2001-0980, is gratefully acknowledged.

1 Introduction

Most work on explaining international income differences is based on the underlying assumption that countries have distinct long-run growth paths. Sala-i-Martin (1996) claims that the primary reason to concentrate on steady-state analysis is that it is easy to study, and it is therefore a spring board on which to advance richer explanations of economic growth. Support for steady-state analysis is even stronger in the empirical literature (for example see Mankiw, Romer and Weil (1992) (MRW), Nonneman and Vanhoudt (1996) and Dinopoulos and Thompson (2000)) which focuses on estimating reduced-form steady-state specifications that successfully fit the cross-country data.¹

Even though the literature has embraced steady-state analysis, it is widely accepted that income disparities are most likely due to some combination of steady-state differences and transition towards the steady state.² In this paper we provide additional evidence supporting the role of transition dynamics in explaining cross-country income differences. We perform a novel exercise in which we take the opposite viewpoint to steady-state analysis: namely, we assume that all countries approach the same balanced growth path, and that their income levels differ because they are at different points along the transition.

More specifically, we study the transition dynamics predictions of a growth model with endogenous technical progress physical and human capital accumulation, and we evaluate their performance in explaining income disparities across countries. Even though the model in this paper exhibits certain properties that can stand out in their own right, the focus is on taking the transition dynamics predictions of the model to the data by using calibration techniques.

The model considered here is an extended version of Jones' (2002) framework with two modifications: First, we allow for human capital stock to accumulate endogenously over time, and second, technology imitation in our model is costly. Following Bils and Klenow (2000), we include the above two modifications to make the model more appropriate to analyze countries at different levels of development. We choose Jones' non-scale growth model – admittedly only one of various candidates – because it has succeeded in reconciling important properties of the data such as increasing R&D intensity and rising educational attainment levels with constant output growth rates. It is

¹MRW explain 78 percent of income variation across 98 countries. Nonneman and Vanhoudt (1996) extend MRW to include R&D capital and also explain 78 percent of the income variation across the OECD countries.

²For example, King and Rebelo (1993) emphasize the important role of adjustment paths in explaining growth experiences. Barro and Sala-i-Martin (1995, Ch. 11) report estimates of regional σ -convergence within countries that allow for a large role for transition dynamics.

important to mention, however, that the non-scale feature of the model is present only along the balanced-growth path; scale effects are possible along the transition, as recently pointed out, for example, by Dinopoulos and Thompson (1998). The model therefore does not impose non-scale behavior to developing economies that maybe in transition to the steady state. Finally, the non-scale growth model can generate the customary MRW type steady-state equation as pointed out by Howitt (2000), a property that will prove helpful in our analysis.

The main finding from this exercise is that transition dynamics are able to explain the cross-country income level dispersion equally well as steady-state regressions do. It is also shown that the transition dynamics of the model can explain (in various degrees) other stylized facts on economic development such as: cross-country dispersion of growth rates, cross-country dispersion of saving/investment rates, cross-country equality of real interest rates. Overall, we interpret our results as suggesting that a world in which nations move along their balanced-growth paths is as likely as a world in which countries move along adjustment paths toward a common (very long-run) steady state.

Work related to our approach – using calibration and taking the implications of growth models to the data – includes Christiano (1989), King and Rebelo (1993), and Chari, Kehoe, and McGrattan (1997). Implications of the non-scale growth model considered in this paper have been extensively explored by Eicher and Turnovsky (1999a, 1999b, 2001), and Perez-Sebastian (2000). Unlike us, these authors do not consider human capital. Recent work that questions steady-state analysis is Jones (2002); however, he focuses only on the U.S. experience.

The rest of the paper is organized as follows. Section 2 presents the basic model. In this section, we establish the economic environment and examine the steady-state and transition dynamics properties of the model. The numerical analysis is presented in section 3. In this section, we simulate the adjustment path, assess how well it fits the cross-country output data, and how well it explains various development stylized facts. In section 4, we perform sensitivity analyses on key parameter values used in the calibration exercise. Section 5 concludes.

2 The Model

In this section we present our model. First, we outline the economic environment under which households and firms operate. Then we solve the socially optimal problem. Our exposition is

focused on aggregate technologies. The main reason is that the human capital technology incorporated in this paper can not be easily derived from a decentralized setup due to aggregation problems.³

2.1 Economic environment

The economy consists of identical infinitely-lived agents, and population grows exogenously at rate n . Agents have preferences only over consumption, and choose to allocate their time endowment in three types of activities: consumption-good production, R&D effort, and human capital attainment.

Our model economy is characterized by the following three equations: First, at period t , output (Y_t) is produced using labor (L_{Yt}) and physical capital (K_t) according to the following aggregate Cobb-Douglas technology:

$$Y_t = A_t^\xi (h_t L_{Yt})^{1-\alpha} K_t^\alpha, \quad 0 < \alpha < 1, \quad \xi > 0, \quad (1)$$

where h_t represents the effectiveness of average human capital level on labor; α is the share of capital; ξ is a technology externality; and A_t is the economy's technical level.

Second, the R&D equation that determines technological progress is given by

$$A_{t+1} - A_t = \mu A_t^\phi (h_t L_{At})^\lambda \left(\frac{A_t^*}{A_t} \right)^\psi, \quad \phi < 1, \quad 0 < \lambda \leq 1, \quad \mu, \psi \geq 0, \quad A_t^* \geq A_t, \quad (2)$$

where L_{At} is the portion of labor employed in the R&D sector at time t ; A_t^* is the worldwide stock of existing technology that grows exogenously at rate g_{A^*} ; ϕ is an externality due to the stock of existing technology; and λ captures the existence of decreasing returns to R&D effort. The above R&D equation is the one proposed by Jones (1995, 2002) plus a *catch-up* term $\left(\frac{A_t^*}{A_t} \right)^\psi$, where ψ is a technology-gap parameter. The catch-up term is also consistent with the “relative backwardness” hypothesis of Findlay (1978) that the rate of technological progress in a relatively backward country is an increasing function of the gap between its own level of technology and that of the advanced country.⁴

³See footnote 6 for a discussion on the aggregation problem of this approach.

⁴Nelson and Phelps (1966) are the first to construct a formal model based on the catch-up term. Parente and Prescott (1994) notice that this formulation implies that development rates increase over time (with A_t^*), and provide empirical evidence that is consistent with this implication. Benhabib and Spiegel (1994) find evidence in favor of an R&D equation with imitation in a large sample of countries.

Third, we have the schooling equation that determines the way by which human capital accumulates. The human capital technology follows Bils and Klenow (2000), who suggest that the Mincerian specification of human capital is the appropriate way to incorporate years of schooling in the aggregate production function. Following their approach, human capital per capita is given by

$$h_t = e^{f(S_t)}, \quad (3)$$

where $f(S_t) = \eta S_t^\beta$, $\eta > 0$, $\beta > 0$; and S_t is the labor force average years of schooling at time t . The derivative $f'(S_t)$ represents the return to schooling estimated in a Mincerian wage regression: an additional year of schooling raises a worker's efficiency by $f'(S_t)$.^{5,6}

We assume that, each period, agents allocate time to human capital formation only after output production has taken place.⁷ Let L_{Ht} be the total amount of labor invested in schooling in the economy at date t . Assume that at some point in time, say period 1, the average educational attainment equals *zero*. Next period, given that consumers live for ever, the average years of schooling will be $S_2 = \frac{L_{H1}}{L_2}$, where L_t is the labor size at date t . In period 3, $S_3 = \frac{L_{H1} + L_{H2}}{L_3}$, and so on. Hence, the average educational attainment can be written as

$$S_t = \frac{\sum_{j=1}^{t-1} L_{Hj}}{L_t}. \quad (4)$$

From equation (4), we can write

$$S_{t+1} = \frac{S_t L_t + L_{Ht}}{L_{t+1}}, \quad (5)$$

⁵For the original discussion on Mincerian wage regressions see Mincer (1974). For recent discussion of the advantages of the Mincerian approach in growth modeling and estimation, see Bils and Klenow (2000), and Krueger and Lindahl (2001).

⁶To be fully consistent with the Mincerian interpretation, $H_{jt} = \sum_{i=1}^{L_{jt}} e^{f(s_{it})}$; where s_{it} is the educational attainment of worker i at date t . The mapping between this expression and equation (3) is not straightforward, and has not been addressed by the literature, with the exception of Lloyd-Ellis and Roberts (2002) who perform only balanced-growth path analysis in a finitely-lived agent framework. The difficulty arises because different cohorts can possess different schooling levels. To make both expressions consistent, we could assume that the first generation of agents pins down the workers' educational attainment, and that posterior cohorts are forced to stay in school until they accumulate this educational level. In this way, all workers would have the same years of education (i.e., $s_{it} = S_t$ for all i), hence $\sum_{i=1}^{L_{jt}} e^{f(s_{it})} = L_{jt} e^{f(S_t)}$. However, introducing this into the model would force us to keep track of the different cohorts' years of education across time, thus making the transitional dynamics analysis much more cumbersome, if not impossible. We leave this important issue to future research.

⁷The primary reason for the particular timing of events is mathematical tractability. In particular, this timing allows writing the motion equation of S_{t+1} as a function of S_t and L_{Ht} (see equation (5)). If timing was reversed, we would obtain the state variable S_{t+1} as a function of S_t and $L_{H,t+1}$ that could make the optimal control problem significantly more difficult to solve.

which in turn implies

$$S_{t+1} - S_t = \left(\frac{1}{1+n} \right) \left(\frac{L_{Ht}}{L_t} - n S_t \right). \quad (6)$$

It is important to notice that the above human capital technology differs from the one employed in Jones (2002). In particular, Jones assumes that education investment fully depreciates each period or, in other words, that human capital does not accumulate. However, the optimal allocation to investment in education declines along the adjustment path and therefore without human capital accumulation, human capital index is larger in lower income nations; clearly a counterfactual result. Our equation (6) does not suffer from this counterfactual result because the value of S rises with the income level, as the international evidence suggests.

2.2 Social planner's problem

Let C_t be the amount of aggregate consumption at date t . A central planner would choose the sequences $\{C_t, S_t, A_t, K_t, L_{Yt}, L_{At}, L_{Ht}\}_{t=0}^{\infty}$ so as to maximize the lifetime utility of the representative consumer subject to the feasibility constraints of the economy, and the initial values L_0 , K_0 , S_0 , and A_0 . The problem is stated as follows:

$$\max_{\{C_t, S_t, A_t, K_t, L_{Yt}, L_{At}, L_{Ht}\}} \sum_{t=0}^{\infty} \rho^t \left[\frac{\left(\frac{C_t}{L_t} \right)^{1-\theta} - 1}{1-\theta} \right], \quad (7)$$

subject to,

$$Y_t = A_t^\xi \left(e^{f(S_t)} L_{Yt} \right)^{1-\alpha} K_t^\alpha, \quad (8)$$

$$I_t = K_{t+1} - (1-\delta) K_t = Y_t - C_t, \quad (9)$$

$$A_{t+1} - A_t = \mu A_t^\phi \left(e^{f(S_t)} L_{At} \right)^\lambda \left(\frac{A_t^*}{A_t} \right)^\psi, \quad (10)$$

$$S_{t+1} - S_t = \left(\frac{1}{1+n} \right) \left(\frac{L_{Ht}}{L_t} - n S_t \right), \quad (11)$$

$$L_t = L_{Yt} + L_{At} + L_{Ht}, \quad (12)$$

$$\frac{L_{t+1}}{L_t} = 1+n, \quad \text{for all } t, \quad (13)$$

$$\frac{A_{t+1}^*}{A_t^*} = 1 + g_{A^*}, \quad (14)$$

L_0, S_0, K_0, A_0 given,

where θ is the inverse of the intertemporal elasticity of substitution; ρ is the discount factor; and δ is the depreciation rate of physical capital. Equation (9) is a feasibility constraint as well as the law of motion of the stock of physical capital; it states that, at the aggregate level, domestic output must equal consumption plus physical capital investment, I_t . Equation (12) is the labor constraint; the labor force – that is, the number of people employed in the output and the R&D sectors – plus the number of people in school must be equal to population.

Solving this dynamic optimization problem obtains the Euler equations that characterize the optimal allocation of labor in human capital investment, in R&D investment, and in consumption/physical capital investment respectively as follows:

$$\left(\frac{C_t}{L_t}\right)^{-\theta} \frac{(1-\alpha)Y_t}{L_{Yt}} = \frac{\rho}{1+n} \left(\frac{C_{t+1}}{L_{t+1}}\right)^{-\theta} \frac{(1-\alpha)Y_{t+1}}{L_{Y,t+1}} \left[1 + f'(S_{t+1}) \left(\frac{L_{Y,t+1}}{L_{t+1}} + \frac{L_{A,t+1}}{L_{t+1}}\right)\right], \quad (15)$$

$$\begin{aligned} \left(\frac{C_t}{L_t}\right)^{-\theta} \frac{(1-\alpha)Y_t}{L_{Yt}} &= \frac{\rho}{1+n} \left(\frac{C_{t+1}}{L_{t+1}}\right)^{-\theta} \frac{\lambda(A_{t+1} - A_t)}{L_{At}} * \\ &* \left\{ \frac{\xi Y_{t+1}}{A_{t+1}} + \left[1 + (\phi - \psi) \left(\frac{A_{t+2} - A_{t+1}}{A_{t+1}}\right)\right] \left[\frac{\frac{(1-\alpha)Y_{t+1}}{L_{Y,t+1}}}{\frac{\lambda(A_{t+2} - A_{t+1})}{L_{A,t+1}}} \right] \right\}, \quad (16) \end{aligned}$$

$$\left(\frac{C_t}{L_t}\right)^{-\theta} = \frac{\rho}{1+n} \left(\frac{C_{t+1}}{L_{t+1}}\right)^{-\theta} \left[\frac{\alpha Y_{t+1}}{K_{t+1}} + (1 - \delta) \right]. \quad (17)$$

At the optimum, the planner must be indifferent between investing one additional unit of labor in schooling, R&D, and final output production. The LHS of equations (15) and (16) represent the return from allocating one additional unit of labor to output production. The RHS of equation (15) is the discounted marginal return to schooling, taking into account labor growth. The RHS term in brackets arises because human capital determines the effectiveness of labor employed in output production as well as in R&D. The RHS of equation (16) is the return to R&D investment. An additional unit of R&D labor generates $\frac{\lambda(A_{t+1} - A_t)}{L_{At}}$ new ideas for new types of producer durables. Every new design increases next period's output by $\frac{\xi Y_{t+1}}{A_{t+1}}$ and R&D production by $\frac{dA_{t+2}}{dA_{t+1}}$ times $\frac{(1-\alpha)Y_{t+1}}{L_{Y,t+1}} \left[\frac{\lambda(A_{t+2} - A_{t+1})}{L_{A,t+1}} \right]^{-1}$, where the term $\frac{(1-\alpha)Y_{t+1}}{L_{Y,t+1}} \left[\frac{\lambda(A_{t+2} - A_{t+1})}{L_{A,t+1}} \right]^{-1}$ gives the value of one

additional design that equalizes labor wages across sectors. Euler equation (17) is standard and states that the planner is indifferent between consuming one additional unit of output today and converting it into capital (thus consuming the proceeds tomorrow).

2.3 Steady-state growth

We now derive the model's balanced-growth path. Solving for the interior solution, equation (12) implies that in order for the labor allocations to grow at constant rates, L_{Ht} , L_{Yt} and L_{At} must all increase at the same rate as L_t . This means that the ratio $\frac{L_{Ht}}{L_t}$ is invariant along the balanced-growth path. Hence, equation (11) implies that, at steady-state (ss), S_{ss} is constant and is given by

$$S_{ss} = \frac{u_{H,ss}}{n}, \quad (18)$$

where $u_{H,ss} = \frac{L_H}{L} \Big|_{ss}$. Equation (18) shows that along the balanced-growth path the economy invests in human capital just to provide new generations with the steady-state level of schooling.

Let lower case letters denote per capita variables, and $g_x = G_x - 1$ denote the growth rate of x . The aggregate production function, given by equation (8), combined with the steady-state condition $g_{Y,ss} = g_{K,ss}$ delivers the gross growth rate of output as a function of the gross growth rate of technology as

$$G_{Y,ss} = (G_{A,ss})^{\frac{\xi}{1-\alpha}} (1+n). \quad (19)$$

Since $G_{A,ss}$ is a constant, it follows from equation (2) that

$$G_{A,ss} = \left[(1+n)^\lambda (G_{A^*,ss})^\psi \right]^{\frac{1}{1+\psi-\phi}}. \quad (20)$$

Equation (20) shows the relationship between the technology frontier growth rate and the technology growth rate of the model economy. Since $\frac{\psi}{1+\psi-\phi} < 1$, it is easy to show that there is a unique point at which

$$G_{A,ss} = G_{A^*,ss} = (1+n)^{\frac{\lambda}{1-\phi}}. \quad (21)$$

Given the nature of the experiments that we want to carry out, we focus on the special case in which all countries grow at the same rate in steady state. That is, we assume that $G_{A^*,ss}$ is given

by expression (21), and therefore so is $G_{A,ss}$.⁸ This in turn implies that

$$G_{Y,ss} = G_{C,ss} = G_{K,ss} = (1+n)^{\frac{\lambda\xi}{(1-\alpha)(1-\phi)}}. \quad (22)$$

Consistent with Jones (1995, 2002) our balanced-growth path is free of *scale effects*. The reason why our model's long-run growth is equivalent to that of Jones even in the presence of a schooling sector, is that at steady state the mean years of education, S_t , reaches a constant level S_{ss} .

2.4 Transition dynamics

The aggregate production function, equation (8), suggests that we normalize variables by the term $A_t^{\frac{\xi}{1-\alpha}} L_t$. We then rewrite consumption, physical capital and output as $\hat{c}_t = \frac{C_t}{A_t^{\frac{\xi}{1-\alpha}} L_t}$, $\hat{k}_t = \frac{K_t}{A_t^{\frac{\xi}{1-\alpha}} L_t}$ and $\hat{y}_t = \frac{Y_t}{A_t^{\frac{\xi}{1-\alpha}} L_t}$, respectively. Using equation (15) gives

$$\left(\frac{\hat{c}_{t+1}}{\hat{c}_t}\right)^\theta \left(\frac{u_{Y,t+1}}{u_{Yt}}\right) (G_{At})^{\frac{(\theta-1)\xi}{1-\alpha}} \left(\frac{\hat{y}_t}{\hat{y}_{t+1}}\right) = \left(\frac{\rho}{1+n}\right) [f'(S_{t+1})(u_{Y,t+1} + u_{A,t+1}) + 1], \quad (23)$$

where u_{Yt} and u_{At} are the labor shares in R&D and final-output production at time t , respectively.

From the R&D equation (2), we get

$$G_{At} = \frac{A_{t+1}}{A_t} = 1 + v \left[e^{f(S_t)} u_{At} \right]^\lambda T^{(1+\psi-\phi)}, \quad (24)$$

where $T = \frac{A_t^*}{A_t}$; and $v = \mu (A_t^*)^{\phi-1} L_t^\lambda$, which is a constant.⁹ From equation (16) we get

$$\begin{aligned} \left(\frac{\hat{c}_{t+1}}{\hat{c}_t}\right)^\theta \left(\frac{\hat{y}_t}{\hat{y}_{t+1}}\right) \left(\frac{u_{Y,t+1}}{u_{Yt}}\right) &= \frac{\rho g_{At}}{G_{At}^{\frac{\xi}{1-\alpha}(\theta-1)+1}} \left(\frac{u_{A,t+1}}{u_{At}}\right) * \\ &* \left[\left(\frac{\lambda\xi}{1-\alpha}\right) \left(\frac{u_{Y,t+1}}{u_{A,t+1}}\right) + \left(\frac{1}{g_{A,t+1}}\right) + (\phi - \psi) \right]. \end{aligned} \quad (25)$$

⁸ Alternatively, we could assume that the technology leader shifts outward the world technological frontier according to equation (2) which now reduces to

$$A_{t+1}^* - A_t^* = \mu A_t^{*\phi} (h_{At}^* L_{At}^*)^\lambda,$$

where $\frac{A_t^*}{A_t} = 1$ as imitation is not possible at the frontier; and $*$ denotes the value which variables take in the leading country. In such case $G_A^* = 1 + g_A^* = (1+n^*)^{\frac{\lambda}{1-\phi}}$ as in Jones (1995, 2002). Assuming that $n = n^*$, and substituting G_A^* into equation (20) delivers equation (21).

⁹To show that v is constant requires some algebra. Rewriting the equality in its gross growth form, $\frac{v_{t+1}}{v_t} = G_{A_t^*}^{\phi-1} (1+n)^\lambda$, and given that $G_{A_t^*} = G_{A,ss} = (1+n)^{\frac{\lambda}{1-\phi}}$, it follows that $\frac{v_{t+1}}{v_t} = 1$. Notice that had A_t^* not grown according to equation (21), v could not be constant, making the simulation exercise much more difficult to implement.

Finally, from equation (17) we get

$$\frac{1+n}{\rho} \left[\left(\frac{\hat{c}_{t+1}}{\hat{c}_t} \right) (G_{At})^{\frac{\xi}{1-\alpha}} \right]^\theta = \alpha \frac{\hat{y}_{t+1}}{\hat{k}_{t+1}} + (1-\delta). \quad (26)$$

The system that determines the dynamic equilibrium normalized allocations is formed by the conditions associated with three control and three state variables as follows:

Control Variables:

1. Euler equation for labor share in schooling, u_{Ht} : Equation (23)
2. Euler equation for labor share in R&D, u_{At} : Equation (25)
3. Euler equation for consumption, \hat{c}_t : Equation (26)

Subject to the constraint $u_{Yt} = 1 - u_{At} - u_{Ht}$.

State Variables:

1. Law of motion of human capital, S_t : Equation (6)
2. Law of motion of technology, A_t : Equation (24)
3. Law of motion of physical capital

$$(1+n)\hat{k}_{t+1} (G_{At})^{\frac{\xi}{1-\alpha}} = (1-\delta)\hat{k}_t + \hat{y}_t - \hat{c}_t, \quad (27)$$

where

$$T_{t+1} = T_t \left(\frac{G_{A^*t}}{G_{At}} \right), \quad (28)$$

and

$$\hat{y}_t = \hat{k}_t^\alpha \left[e^{f(S_t)} u_{Yt} \right]^{1-\alpha}. \quad (29)$$

3 Numerical Analysis

In this section we take the proposed model to the data by means of a calibration exercise. We first assign values to the parameters. Then, we simulate the transition dynamics, and compare their predictions to the data. Because there is no analytical solution to our system of Euler and motion equations presented in the previous section, we resort to numerical approximation techniques. More specifically, we follow Judd (1992) to solve the dynamic equation system, approximating the policy functions by employing high-degree polynomials in the state variables.¹⁰

¹⁰In particular, the parameters of the approximated decision rules are chosen to (approximately) satisfy the Euler equations over a number of points in the state space, using a nonlinear equation solver. A Chebyshev polynomial

Table 1: Parameter values used in the simulations: Benchmark case

α	0.36	ξ	0.1	S_{ss}	12.5
ρ	0.96	G_y	1.02	η	0.69
δ	0.06	λ	0.5	β	0.43
n	0.012	ϕ	0.95	θ	1.19

3.1 Calibration

Because relative values of the cross-country data to which we compare the predictions of the model are taken with respect to U.S. levels, we calibrate the model parameters using, when possible, U.S. data as the steady-state outcome. Table 1 presents the parameter values used to carry out the simulations. We choose a value of 0.06 for the depreciation rate (δ), a value of 0.96 for the discount factor (ρ) and 0.36 for the capital-share of output (α), which are standard in the literature. To assign values to per capita income growth rate in steady-state ($g_{y,ss}$), and to population growth rate (n), we follow Jones (2002). In particular, we set $g_{y,ss}$ equal to 2 percent, the average growth of output per hour worked between 1950 and 1993 in the U.S., and n equal to 1.2 percent, the average growth rate of the labor force in the G-5 countries (France, West Germany, Japan, the United Kingdom, and the United States) during the period 1950-1993. The reason for using the average growth rate of labor in the G-5 rather than any other group of countries (or, for that matter, the whole sample) is that the main role of population growth rate in the model is to move the world technology frontier in steady state, and clearly the majority of world research effort is conducted in the G5 countries.¹¹ Regarding the value of the elasticity of output with respect to the technology, Grilliches (1988) reports estimates of ξ between 0.06 and 0.1. We choose to follow Eicher and Turnovsky (1999b, 2001) and set $\xi = 0.1$.

It is not clear what the steady-state value of the average educational attainment ought to be, given that mean years of schooling has been increasing over the last decades in most developed countries. We choose to set S_{ss} to 12.5, to match the 1993 U.S. figure reported in Jones (2002).

basis is used to construct the policy functions, and the zeros of the basis form the points at which the system is solved; that is, we use the method of orthogonal collocation to choose these points. Finally, tensor products of the state variables are employed in the polynomial representations. This method has proven to be highly efficient in similar contexts. For example, in the one-sector growth model, Judd (1992) finds that the approximated values of the control variables disagree with the values delivered by the true policy functions by no more than one part in 10,000. All programs were written in GAUSS and are available by the authors upon request.

¹¹Coe, Helpman and Hoffmaister (1997) report that in 1990, industrial countries accounted for 96% of the worlds R&D expenditure.

From equations (18), (23) and (26), it can be easily shown that the values of S_{ss} , n and $G_{y,ss}$ imply an interest rate (given by the RHS of (26)) at steady state of 7.9 percent that is well within U.S. observations.¹² In turn, substituting the values of the steady-state interest rate, ρ , n and $G_{y,ss}$ into equation (15) imply that the inverse of the intertemporal elasticity of substitution (θ) is 1.19, which is well within the empirical estimates.¹³ Following Bils and Klenow (2000), we use Psacharopoulos' (1994) cross-country sample on average educational attainment and Mincerian coefficients to estimate η and β . Given $f(S) = \eta S^\beta$, we can construct the regression

$$\ln(Mincer_i) = a + b \ln S_i + \varepsilon_i, \quad (30)$$

where $Mincer_i = f'(S_i)$ is the estimated Mincerian coefficient for country i ; a and b equal $\ln(\eta\beta)$ and $(\beta - 1)$, respectively; and ε_i is a disturbance term. We obtain $\eta = 0.69$ and $\beta = 0.43$ which are very close to estimates by Bills and Klenow (2000).

Finally, we calibrate the R&D technology parameters. As a benchmark case, we set $\lambda = 0.5$, and using equation (21) we recover the value of $\phi = 0.95$.¹⁴ Given that the effect of the parameter ψ is purely transitional, we follow Parente and Prescott (1994) and calibrate it to replicate miraculous experiences.¹⁵ In particular, we choose ψ so as to reproduce the relative output per worker path between 1960 and 1990 in Japan and between 1963 and 1990 in S. Korea.¹⁶ We choose to calibrate ψ for these two economies because they have experienced distinctly different development experiences, notwithstanding their equally impressive growth rates (Japan grew at 5.2 percent per year and S. Korea at 6.5 percent per year during the relevant periods), therefore making it possible to obtain values for ψ that are potentially quite different. The S. Korean development experience implies a value for ψ of 0.18, whereas the Japanese development experience implies that ψ equals 0.22. The initial values of the stock variables and the output data used to calibrate ψ , as well as the accuracy measures are presented in table 2.

¹²For example, King and Rebelo (1993) reports average real rates of return for the period 1926-1987 on different U.S. securities that vary between 0.42 and 8.80 percent.

¹³Estimates of θ by Hall (1988), and Attanasio and Weber (1993) range from 1 to 3.5. For a recent discussion on estimates of θ see Guvenen (2002).

¹⁴In the next section, we perform a sensitivity analysis on key parameters of the model.

¹⁵As in Parente and Prescott (1994), we smooth the data series involved in the calibration of ψ using the Hodrick- Prescott filter with the smoothing parameter equal to 25.

¹⁶S. Korea's rapid convergence toward U.S. income levels began around 1963. Japanese convergence, on the other hand, started right after WWII. Unfortunately, the Japanese Education Department does not possess estimates of the average educational attainment before 1960. We are grateful to Tomoya Sakagami who has attempted to obtain these data for us.

Table 2: Variable values used to calibrate ψ , and accuracy measures

<i>Country</i>	ψ	Initial Relative Levels				In 1990	Average Error*(%)			Max. Error*(%)		
		K per worker	S years	Y per worker	Y per worker		C	u_Y	u_A	C	u_Y	u_A
Japan	0.18	16.9%	10.2	20.6%	60.3%	0.01	0.01	0.01	0.03	0.05	0.04	
Korea	0.22	11.6%	3.2	11.0%	42.2%	0.07	0.20	0.07	0.30	0.93	0.32	
Non-oil	0.18	5.4%	2.7	10.4%	—	0.20	0.49	0.13	0.91	2.38	0.56	
sample	0.22	5.4%	2.7	10.4%	—	0.19	0.48	0.14	0.89	2.32	0.59	

* We assess the Euler equation residuals over 10,000 state-space points using the approximated rules. For each variable, the measure gives the current value decision error that agents using the approximated rules make, assuming that the (true) optimal decisions were made in the previous period. Santos (2000) shows that the residuals are of the same order of magnitude as the policy function approximation error.

3.2 Transition dynamics predictions

Unlike steady-state regressions, in this section we assume that all countries belong to the same transitional path, approaching a unique, common balanced-growth path. Specifically, we perform two experiments as follows: First, we simulate the dynamics of a representative economy and study how well its adjustment path represents the cross-country data on key variables such as the state variables, interest rates, investment rates, and output growth rates. Second, we propose a similar in spirit exercise to that of MRW which however tries to assess how much of the cross-country output variation can be explained by transition dynamics.¹⁷ The primary motivation for these two experiments is to examine how well the transitional dynamics of the proposed model can explain cross-country per capita income dispersion and other important stylized facts.

To carry out the first experiment, we need to estimate the policy rules that take state variables from given initial values to the steady state. Doing so requires the following two conditions: (a) given that the further away we move from the balanced-growth path the lower the accuracy degree of the numerical approximation, we choose the initial values so that the numerical approximation provides a maximum-error measure of about 2 percent (see table 2); (b) we start the adjustment

¹⁷In addition, we have investigated the asymptotic speed of convergence implied by the model – the rate by which a country’s output converges to its balanced growth path once the country is sufficiently close to its long-run equilibrium. In our model, this speed is given by the largest eigenvalue among those contained in the unit circle. Parameter values in the neighborhood of those employed in our calibration deliver speeds of convergence that vary between 1.06%–2.08%, consistent with most empirical evidence. Our results are consistent with the finding of Eicher and Turnovsky (1999b, 2001), that moving from one-sector to multi-sector non-scale growth models with endogenous technological change leads to severe reduction in the asymptotic speed of convergence, and allows convergence speeds to vary across time and variables.

paths inside the cloud of cross-country observations that compose our comprehensive sample.¹⁸ Given conditions (a) and (b), we pick an initial value for the relative physical capital stock per worker of 5.4 percent, an initial value for the average educational attainment of 2.7 years, and an initial value for relative total factor productivity (TFP) of 55.2 percent so as to generate a relative GDP per worker level of 10.4.^{19,20}

The goal of the first experiment is to see how well the transition dynamics of the model can explain important stylized facts such as cross-country dispersion of growth rates, cross-country dispersion of saving/investment rates, and cross-country equality of real interest rates. Figure 1 depicts cross-sectional data, along with off-steady-state predictions for physical capital, average years of schooling, TFP, interest rates, investment rates, and relative output growth. It is evident that the plotted data show wide cross-country dispersion in all variables, except for real interest rates that are quite uniform across nations above the 25th percentile. State variables (K, S, A) generally increase with the relative level of output, and investment and growth rates generally depict weak inverted-U shapes, starting low and achieving their maximum values for middle-income nations.²¹

With fixed initial and final values of the state variables, the question is how well the transition path follows the data cloud in between. If we look at the charts on the left of figure 1 (panels (A), (C) and (E)), the primary finding is that the simulated dynamics seem to fit well across the state-variable observations. These charts illustrate a number of other points worth noting. First, notice that a larger degree of *relative backwardness* (i.e., a larger value of ψ) induces faster technology catch-up, and slower human capital accumulation, making the adjustment paths better fit the data. Second, the simulated physical and human capital levels tend to diverge with respect to the rich countries' data. This is the result of calibrating the steady state to U.S. data. The two variables' divergent processes, however, offset each other and as a result, the technology path captures well

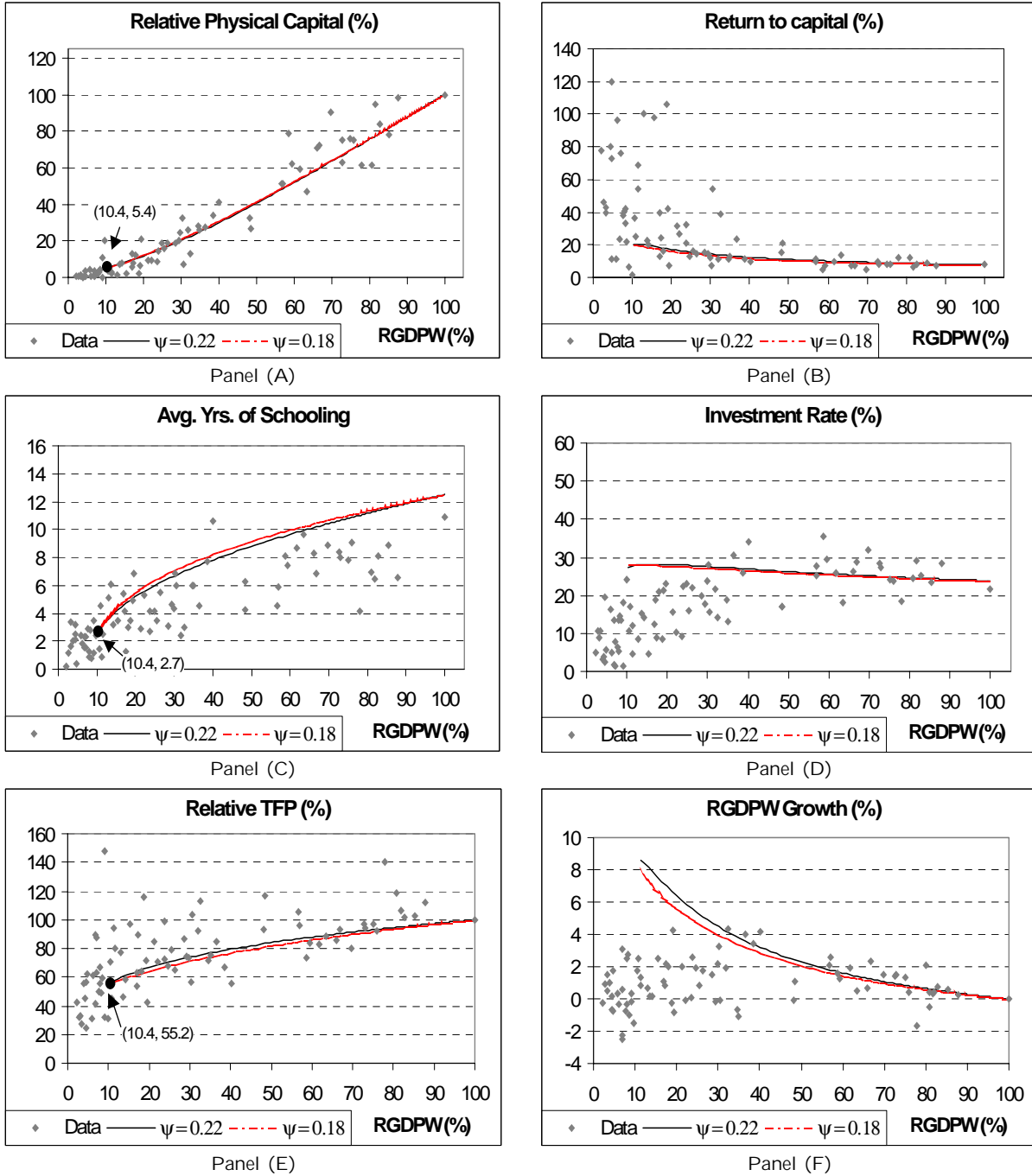
¹⁸Our comprehensive sample (79 countries) consists of the MRW's non-oil nations for which average years of schooling per worker are available from the STARS (World Bank) database, minus Ireland, which is eliminated from the sample due to implausibly high schooling figures. For further discussion on the data, see the data appendix.

¹⁹Notice that for relative GDP per worker level of 10.4 our numerical approximation commits a maximum error of 2.38 percent in accordance to condition (a), see table 2.

²⁰In our simulation exercise, TFP is broadly defined and includes everything not already captured by the other two stock variables, S and K .

²¹Following Jones (1997), we compute real interest rates (return to capital) as the marginal product of capital, that is, $\alpha Y/K$. As Jones, we find that the resulting returns for countries below the 25th percentile are highly heteroskedastic, and that some nations present returns above 100 percent. The main pattern that we observe, however, is a large amount of uniformity in the returns to capital above the 25th percentile.

Figure 1: Adjustment paths for the non-oil sample: Benchmark case



Note: *RGDPW* is relative GDP per worker.

the observations.

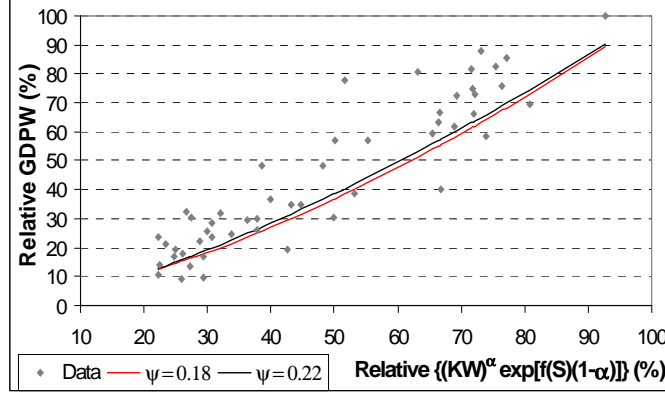
Finally, let us pay attention to the charts on the right of figure 1. Below the 30th percentile in panel (F), output-growth predictions are too large, thus our model overpredicts output growth at early stages of development. Above the 30th percentile, however, predictions fall across the cloud of observations, thus our model does much better in predicting output growth at later stages of development. In addition, panels (B) and (D) show that predictions capture the uniformity of the real interest rates (return to capital) above the 25th percentile, and are consistent with investment rates above the 35th percentile. As is the case with output growth our model is weaker in replicating interest and investment rates at early development.

Our first experiment has shown that transition dynamics capture fairly well the cross-country equality of the real interest rates, and generate investment rates that are plausible, even though lower investment ratios at early levels of development would better capture the dispersion of the data. The main explanation for this lower dispersion of the predictions is probably a larger degree of market imperfections and distortions in less developed countries, something that the model can not explain, and that can be perceived as a source of differences in steady states or in convergence speeds along the transition. The predicted output growth rates, on the other hand, are clearly impossible for countries with relative real GDP below the 30th, but reasonable for more developed nations. For the sake of comparability between transition dynamics predictions and steady-state regression predictions, it is important to mention that steady-state predictions are not very successful in accounting for the observed cross-country income growth dispersion either. Steady-state growth regressions of the MRW type need to make use of transitional factors to be able to minimally fit the data.

3.3 Can transition dynamics explain the cross-country output data?

We now turn attention to the main issue of the paper: How well can the transition dynamics of the model explain cross-country income dispersion? More specifically, our second experiment tries to assess quantitatively how well the transition dynamics fit the output per worker data. This is important because fitting the cross-country income data is where steady-state regressions achieve their great success and therefore such an experiment is well motivated. Since, we want to compare the transition dynamics predictions of our model with those of steady-state income regressions, we need to construct a measure of fit for transition dynamics that can be compared with a measure of

Figure 2: Adjustment-path predictions of GDP per worker for 51-nation sample: Benchmark case



Note: $GDPW$ and KW denote GDP per worker and physical capital per worker, respectively.

fit in level regressions (namely the OLS R^2).

Taking logs in the Cobb-Douglas representation of the aggregate production function, and substituting inputs for their balanced-growth values, we end up with a standard in the literature steady-state econometric equation

$$\log \hat{y} = \hat{\tau}_0 + \hat{\tau}_1 \log \hat{k} + \hat{\tau}_2 \log \hat{S} + \varepsilon, \quad (31)$$

where \hat{y} is the estimate of output per worker; \hat{k} and \hat{S} represent estimates of k and S , respectively, derived from steady-state conditions using investment rates; $\hat{\tau}_i$'s are estimated coefficients; and ε is a random disturbance term. Evidently, in order for the underlying model to be consistent with the data, estimated coefficients must be plausible according to the weight assigned by the national accounts to the different inputs. To each combined value $(\hat{\tau}_1 \log \hat{k} + \hat{\tau}_2 \log \hat{S})$ the regression assigns a predicted output level in log-scale, and all of the predicted output levels are in turn translated into a measure of fit (the OLS R^2).

Following an equivalent procedure, we first calculate for each country the combined value $e^{f(S)(1-\alpha)}[K/(L_A + L_Y)]^\alpha$ implied by the data, imposing the calibrated parameter values. Notice that this *extended* state variable represents the per worker human capital term (i.e. $e^{f(S)(1-\alpha)}$), and the per worker physical capital term (i.e. $[K/(L_A + L_Y)]^\alpha$), as specified in the production function given by equation (8). Second, to each country's value of the combined state variable, we assign the output per worker level $Y/(L_A + L_Y)$ predicted by the transition path.²²

²²Because the simulated adjustment path is a discrete set of pairs $(e^{f(S)(1-\alpha)}[K/(L_A + L_Y)]^\alpha, Y/(L_A + L_Y))$, we

Table 3: Measure of fit for adjustment-path predictions of log-GDP per worker: Benchmark case

Country groups	<i>Pseudo-R</i> ²	
	$\psi = 0.18$	$\psi = 0.22$
51-country sample	0.736	0.764
21-OECD	0.710	0.759

As mentioned previously, to generate the adjustment path simulation, we employ initial values for the relative per worker physical capital stock, and the average educational attainment of 5.4 percent and 2.7 years, respectively. It works out that these two initial values imply a minimum value of the relative *extended* state-variable of 18.9 percent. The sample that we employ to compute the measure of fit must then consists of those 51 nations that provide values of the *extended* state variable above 18.9 percent.²³

Figure 2 displays the actual output data (plot), and the predicted output data for the two values of ψ (continuous lines). To assess the fit of the adjustment paths, we employ the following statistic which is equivalent to the OLS R^2 :

$$Pseudo-R^2 = 1 - \frac{\sum_{j=1}^N (\hat{x}_j - x_j)^2}{\sum_{j=1}^N \left(x_j - \frac{1}{N} \sum_{p=1}^N x_p \right)^2},$$

where \hat{x}_j and x_j are the predicted and actual values of variable x for country j , respectively; and N is the number of countries included in the sample. Our variable x must be the natural log of relative GDP per worker to make the *pseudo-R*² comparable to the R^2 reported in steady-state regressions.

For the adjustment path predictions expressed in natural logs, table 3 reports estimates of the *pseudo-R*². As it is shown, the transition path can explain up to 76 percent of the relative output per worker variation in both the 51-non-oil and the 21-OECD samples. These numbers compare pretty well with the R^2 obtained by steady-state regressions. For example, MRW report a maximum R^2 of 78 percent for their non-oil sample, and 28 percent for the OECD group. Nonneman and Vanhoudt (1996), in turn, obtain an R^2 of 78 percent for OECD nations. These numbers are just a bit above the ones delivered by the transition predictions.

How can one interpret our results in the context of the existing empirical literature? Our results imply that the transition dynamics of an R&D model with endogenous human capital can use interpolation methods to generate the predicted output level.

²³An asterisk identifies these 51 nations in the data table contained in the Appendix.

Table 4: Measure of fit for adjustment-path predictions of log-GDP per worker: Sensitivity analysis

λ	ϕ	θ	Implied values	<i>Pseudo-R</i> ²			
				51-country sample		21-OECD sample	
				$\psi = 0.18$	$\psi = 0.22$	$\psi = 0.18$	$\psi = 0.22$
0.25	0.95	1.19	$g_{y,ss} = 1.00\%$ $S_{ss} = 13.1$	0.687	0.719	0.551	0.634
0.25	0.95	1.38	$g_{y,ss} = 1.00\%$ $S_{ss} = 12.5$	0.731	0.756	0.668	0.727
0.75	0.95	1.19	$g_{y,ss} = 3.00\%$ $S_{ss} = 11.9$	0.748	0.773	0.759	0.793
0.75	0.95	1.13	$g_{y,ss} = 3.00\%$ $S_{ss} = 12.5$	0.716	0.748	0.698	0.748
0.50	0.70	2.20	$g_{y,ss} = 0.31\%$ $S_{ss} = 12.5$	0.794	0.799	0.792	0.802
0.50	0.50	3.00	$g_{y,ss} = 0.19\%$ $S_{ss} = 12.5$	0.802	0.802	0.813	0.817
				$\psi = 0.10$	$\psi = 0.30$	$\psi = 0.10$	$\psi = 0.30$
0.50	0.95	1.19	$g_{y,ss} = 2.00\%$ $S_{ss} = 12.5$	0.655	0.791	0.522	0.802

explain the cross-country output variation as well as the more popular steady-state regressions can. Our findings do not discredit in any way the common steady-state regression exercises. They do however provide evidence that transition dynamics maybe at least as important as steady-states in explaining income differences.

4 Robustness Analysis of the Results

In this section, we perform a sensitivity analysis of our results to changes in key parameter values. In particular, we focus on the R&D technology parameters, the population growth rate, the discount factor, and the elasticity of final output with respect to technology. We mainly study how changes in these parameters affect our measure of fit (*Pseudo-R*²) that assesses the capacity of the model to explain the cross-country dispersion of output per worker.

It is known from Jones (1995) and Eicher and Turnovsky (1999b, 2001) that the type of non-scale R&D growth models that we use is highly sensitive to the returns to scale and the shares of technology and labor in the R&D sector. In order to study the robustness of our results, we carry out sensitivity analyses for different values of the parameters λ , ϕ , and ψ .

Estimates of the labor share in the R&D sector, λ , found in the literature vary from 0.2 (Kortum (1993)) to 0.75 (Jones and Williams (2000)) We start the robustness analysis by examining how the measure of fit changes when we replace our baseline value of $\lambda = 0.5$ with the more extreme values $\lambda = 0.25, 0.75$. As shown in the first row of results in table 4, when we reduce λ from 0.5

to 0.25, the adjustment path generates a *pseudo-R*² up to 72 percent for the 51-country sample and up to 63 percent for the 21-OECD sample. As expected the decrease in λ results in lower steady-state per worker income growth rates ($g_{y,ss}$ falls from 2 percent to 1 percent). But the effect of lowering λ on the measure of fit comes mainly from the increase in the steady-state educational attainment level, S_{ss} , which goes from 12.5 up to 13.1 years, and moves the predictions of S away from the cloud of points.²⁴ The second row of table 4 confirms this point. In particular, we show that when we modify θ to obtain the baseline value $S_{ss} = 12.5$, the measure of fit increases up to 76 percent for the 51-country sample and 73 percent for the 21-OECD sample. When, on the other hand, the parameter λ is 0.75 (see third row of results in table 4) then the *pseudo-R*² rises to 77 and 79 percent for the 51-country and 21-OECD samples, respectively. The fourth row of results in the table (in which we modify θ to obtain the baseline value $S_{ss} = 12.5$), once again confirms that the induced variation in the steady-state average educational level is the main cause of the change in the measure of fit. In short, the underlying intuition for the increase in the *pseudo-R*² as the parameter λ rises is the same as that explaining the benchmark case: a lower rate of human capital formation coupled with a faster technological catch-up process make the predictions better fit the data in figure 1.

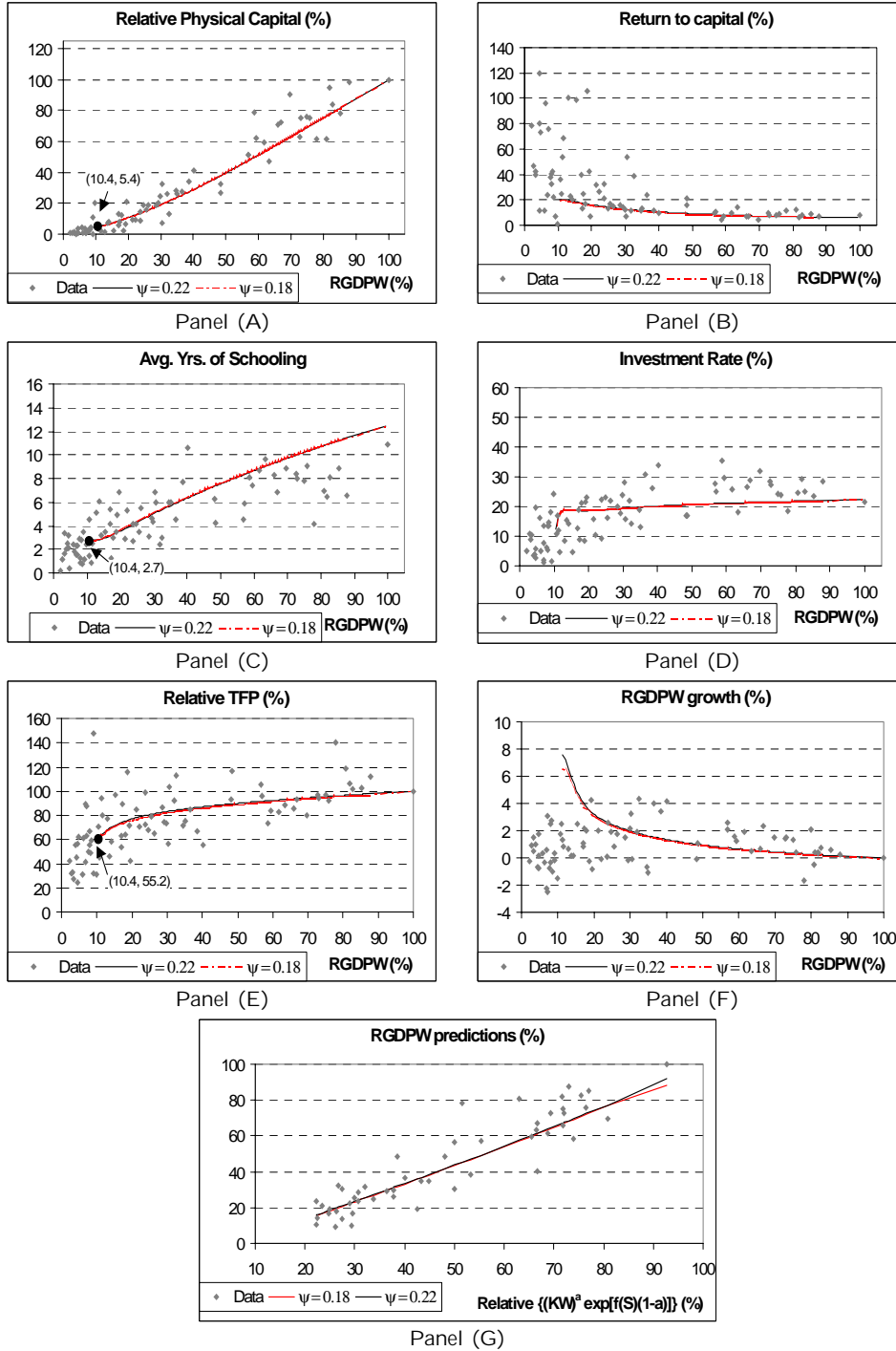
The empirical literature does not offer much guidance in choosing a reasonable value for technology externality ϕ . In our benchmark case, the value for this parameter ($\phi = 0.95$) is pinned down by the balanced-growth equation (22). Some authors like Eicher and Turnovsky (1999b, 2001), however, argue that a value of $\phi = 0.95$ may be too large. The fifth and sixth rows of results in table 4 show that lower values of ϕ actually improve the fit of the predicted dynamics. For example, the *pseudo-R*² takes on values up to 80 percent for both country samples considered when $\phi = 0.70$ and we maintain $S_{ss} = 12.5$. The *pseudo-R*² increases to 82 percent for the 21-OECD sample when ϕ declines further to 0.50.²⁵

To understand the forces that drive the increase in the *pseudo-R*² when ϕ declines, let us focus on figure 3 that presents the adjustment-path predictions in the case where we assume a low value

²⁴The inverse relationship between λ and S_{ss} is the result of labor reallocation between the schooling sector and the R&D sector. For example, a decline in λ decreases the return to working in the R&D sector, therefore making the R&D activity relatively less attractive than schooling. This triggers labor movement from the R&D sector to the schooling sector, and then S_{ss} increases.

²⁵In this exercise, we modify the value of θ to maintain $S_{ss} = 12.5$. As before, if instead the parameter θ remains equal to 1.19 then the fit becomes worse, because S_{ss} rises. However, when $\theta = 1.19$ and $\phi = 0.50$, the *pseudo-R*² is larger than the numbers in the first row of table 4, and to save space we have omitted this case.

Figure 3: Adjustment paths for the non-oil sample: $\phi = 0.50$ case



Note: *RGDPW* is relative GDP per worker.

Table 5: Measure of fit for adjustment-path predictions of log-GDP per worker: Sensitivity analysis

ρ	n	ξ	θ	Implied values		<i>Pseudo-R</i> ² ($\psi = 0.18$)	
						51-country	21-OECD
0.96	0.020	0.10	1.19	$g_{y,ss} = 3\%$	$S_{ss} = 9.0$	0.795	0.761
0.96	0.020	0.10	0.66	$g_{y,ss} = 3\%$	$S_{ss} = 12.5$	0.676	0.613
0.96	0.012	0.06	1.19	$g_{y,ss} = 1\%$	$S_{ss} = 13.0$	0.761	0.747
0.96	0.012	0.06	1.31	$g_{y,ss} = 1\%$	$S_{ss} = 12.5$	0.783	0.789
0.97	0.012	0.10	1.19	$g_{y,ss} = 2\%$	$S_{ss} = 16.4$	0.502	0.114
0.97	0.012	0.10	1.71	$g_{y,ss} = 2\%$	$S_{ss} = 12.5$	0.765	0.761
0.95	0.012	0.10	1.19	$g_{y,ss} = 2\%$	$S_{ss} = 9.8$	0.804	0.824
0.95	0.012	0.10	0.66	$g_{y,ss} = 2\%$	$S_{ss} = 12.5$	0.648	0.534

of $\phi = 0.50$. Compared to figures 1 and 2, the improvement is evident in all the panels. The smaller value of ϕ in the R&D equation reduces the total productivity of R&D effort for any given level of A , thus lowering the economy's capacity to grow, as shown in panel (F).²⁶ At the same time, however, equation (24) and the definition of v that follows imply that a reduction of ϕ is equivalent to a relatively bigger advantage of technological backwardness. The result is that, compared to the benchmark case, output growth at early stages of development is achieved devoting more labor to the R&D sector and less to schooling. This, in turn, generates a relatively larger accumulation of technology (panel (E)) and smaller human capital formation (panel (C)). The better fit of the average educational attainment and TFP predictions explain the improvement in the *pseudo-R*² delivered by the predicted income levels (see panel (G)). Finally, the lower elasticity of substitution between present and future consumption (a larger value of θ) is responsible for the lower investment rates and the improved fit shown in panel (D).²⁷

We now examine how sensitive is the measure of fit to variations in the catch-up term ψ . We know from our previous results that the *pseudo-R*² rises with ψ ; the question now is by how much it can vary. Once again we have no guidance about reasonable values of ψ . We decide to try values of 0.1 and 0.3 so that the calibrated values of ψ for Japan and S. Korea (0.18 and 0.22 respectively)

²⁶Notice that when $\phi = 0.50$, $g_{y,ss}$ decreases to 0.19 percent, a value that might not be impossible in light of new findings by Jones (2002). He argues that the long-run income growth rate for the U.S. can be considerably smaller than the average value experienced during the last century. Compared to our benchmark, another implication of such decline in growth rates is that the half life of the convergence process doubles, going from 41 up to 82 years.

²⁷Adjustment paths similar to those in figure 3 were produced for all parameter values of $\lambda, \phi, \psi, n, \rho$ and ξ considered in tables 4 and 5. Since they do not add anything significant to the analysis, they are omitted but are available by the authors upon request.

are within our chosen range. The last row of table 4 reports our findings. In particular, for $\psi = 0.1$ the *pseudo-R*² is 66 percent for the 51-country sample and 52 percent for the 21-OECD sample, and for $\psi = 0.3$ *pseudo-R*² increases to 79 percent and 80 percent, respectively. Therefore, the decrease in the *pseudo-R*² can be substantial for low values of ψ .

Table 5 provides the measure of fit for changes in other important parameters: the population growth rate (n), the discounting coefficient (ρ), and the elasticity of final output with respect to technology (ξ). Because the *pseudo-R*² is always larger for $\psi = 0.22$, the table presents results only for the $\psi = 0.18$ case. An alternative value of n is given by its average growth rate in the sample. As we include more developing nations, the average population growth rate increases. For instance, the average n for the 51-country sample equals 2 percent. Compared to the numbers in the first column of table 3, the first row of table 5 shows that if we set $n = 0.02$, the *pseudo-R*² goes up to 80 and 76 percent. The reason is the decline in S_{ss} that equals 9.0 in the new scenario. If we modify θ to obtain the baseline value $S_{ss} = 12.5$ (then $\theta = 0.66$), the measure of fit decreases to 68 and 61 percent. This occurs for two reasons: the higher growth rate of output per worker caused by the increase in n , and the larger elasticity of intertemporal substitution ($1/\theta$). The primary effect of these two changes in our experiments is always a faster human capital formation, which as we know is bad for the fit.

We next move the value of ξ . When we try the lower bound reported in Griliches (1988) (i.e., $\xi = 0.06$), the *pseudo-R*² increases (third and fourth rows of results in table 5). Now, the lower value of the elasticity of final output with respect to technology requires a larger initial technology gap to generate the same relative TFP (given by A^ξ in equation (1)). This larger initial technology gap, in turn, increases the initial productivity of R&D, and R&D investment rises at the expense of schooling. The consequence is relatively faster TFP growth and slower human capital formation, which is good for the fit.

Finally, the effect of changes in the value assigned to ρ are presented in rows five to eight in table 5. The fifth row suggests that if the discounting parameter rises to 0.97, future production capacity becomes more valuable for agents, and the steady-state average educational attainment increases to 16.4 years. This clearly moves the predicted evolution of S away from the cloud of points, producing a much lower *pseudo-R*² for output per worker that equals 50 percent for the 51-country sample and 11 percent for the 21-OECD group. The next row shows that when we fix $S_{ss} = 12.5$, the fit actually improves. In particular, the *pseudo-R*² rises to 77 and 76 percent,

respectively. The reason now is the value of $\theta = 1.71$ that makes present and future consumption more complementary, and therefore human and physical capital accumulation proceed more slowly. The smoother path of schooling years is responsible for the better fit. Exactly the opposite reason explains why the *pseudo- R^2* declines to 65 and 53 percent when we set $\rho = 0.95$ and fix $S_{ss} = 12.5$ (last row in table 5): it requires increasing the degree of substitutability between present and future consumption so that $\theta = 0.66$. However, in the seventh row of the table we see that if we do not fix S_{ss} , $\rho = 0.95$ makes S_{ss} decline to 9.8 years and, as a consequence, the fit improves with respect to the benchmark case.

To summarize, the sensitivity analyses on key parameters reveal that for sensible parameter values the predicted income levels explain no less than 72 percent and 67 percent of the observed log-income variability across our 51-country sample and 21-OECD sample, respectively. Values of λ above 0.5 (and values of ξ below 0.1) take these percentages up to 77 and 79, respectively. In addition, the measure of fit increases above 80 percent if we reduce ϕ below 0.7. On the other hand, the fit can decrease below 67 percent if we allow the steady-state average educational attainment, S_{ss} , to be above 12.5 years or θ to be lower than 1. However, this seems to us unreasonable because the maximum value of the average years of education in our samples corresponds to the U.S. and equals 11.35, and because values of θ below 1 go against the available empirical evidence.²⁸ The *pseudo- R^2* can also decrease below 67 percent if we let the catch-up term, ψ , take on values below 0.18; however, we do not know if values that low are reasonable. We conclude that our results are quite robust to sensible changes in the shares of labor and technology in the R&D sector, and in other important parameters.

5 Conclusion

In this paper we have studied the capacity of transition dynamics to explain income disparities across nations. In particular, we have taken the dynamic predictions of a non-scale R&D model with endogenous human capital to the data by considering two experiments. First, we have simulated the dynamics of a representative economy and studied the adjustment paths of key economic variables. Second, we have assessed quantitatively how well the transition dynamics fit the output per worker

²⁸In the Barro and Lee (2000) dataset, the maximum number of years of schooling corresponds to the U.S., whose labor force in 2000 had, on average, 12.05 years of formal education. Regarding empirical estimates of θ , see footnote 13.

data by proposing a similar in spirit exercise to that of MRW.

Our key finding is that transition dynamics are as successful in fitting the cross-country output per worker data as steady-state regressions. How can we reconcile this finding with the evidence against absolute convergence and in favor of conditional convergence? Standard convergence tests, like Barro and Sala-i-Martin (1995), implicitly assume that the half-life of convergence is the same among countries. Hence, one possibility that can reconcile our finding with absolute convergence is that the time required to complete a given portion of the adjustment path varies across economies. From this viewpoint, the diffusion of ideas will ensure ultimately convergence among nations, and country-specific fundamentals such as institutions, geography, and climate would not determine the steady-state outcome but the half-life of the convergence process. Whether or not this is the case is an empirical issue that we believe deserves further research.

In addition, we have shown that dynamic predictions of the model can explain (in various degrees) important stylized facts on economic development. In particular, transitional dynamics capture fairly well the cross-country equality of the real interest rates, and generate investment rates that are plausible especially when the share of technology in R&D is not high. Transition dynamics are less successful in explaining the cross-country dispersion of output growth rates: the predicted rates are impossibly high for the less-developed countries, but reasonable for more developed nations. However, as we explained, this failure is also a feature of steady-state regressions.

The main implication of our results for the empirical growth literature is that by focusing our attention *only* on reduced form balanced-growth predictions we maybe disregarding a substantial part of the story about economic growth. The potential payoff of finding ways to better integrate steady state and transition dynamics conditions can be large, especially in level regression analysis. Indeed, some researchers, e.g. Jones (2002), have already begun to venture along this path. Our work also suggests that transition dynamics analysis must play a more extensive role in discriminating among growth theories, especially in light of the recent improvements achieved on numerical algorithms.

Data Appendix

Data sets and computer programs

The data and programs used in this paper are available by the authors upon request.

- *Income (GDP) and its components* [Source: PWT 5.6]

Cross-country GDP per worker and real investment shares are taken from the Penn World Tables (PWT), Version 5.6 as described by Summer and Heston (1991). This data set is available on-line at: <http://datacentre.chass.utoronto.ca/pwt/index.html>.

- *Physical capital stocks* [Source: STARS, PWT 5.6, and perpetual inventory approach]

For the non-oil cross-country sample, we follow the perpetual inventory approach. The capital stock is calculated by summing investment from its earliest available year (1960 or before) to 1986 with the depreciation rate set at 6 percent. The initial capital stock is determined by the initial investment rate, divided by the depreciation rate plus the growth rate of investment during the subsequent ten years. In the calibration of the parameter ψ , the Japanese physical capital stock in 1960 and S. Korean physical capital in 1963 are obtained by deflating the 1965 PWT data (which unfortunately do not extend to 1960), using growth rates implied by the STARS physical capital data.

- *Labor force* [Source: PWT 5.6]

The cross-country data set on the labor force is also taken from the Penn World Table, Version 5.6.

- *Education* [Source: STARS (World Bank)]

Annual data on educational attainment are the sum of the average number of years of primary, secondary and tertiary education in labor force. These series were constructed from enrollment data using the perpetual inventory method, and they were adjusted for mortality, drop-out rates and grade repetition. For a detailed discussion on the sources and methodology used to build this data set see Nehru, Swanson, and Dubey (1995).

- *Return to capital*

Annual data on return to capital (r_t) is calculated as

$$r_t = \alpha \frac{Y}{K}.$$

Countries in the comprehensive sample

Our comprehensive sample includes the 79 countries from the Mankiw, Romer and Weil (1992) non-oil sample for which annual data on income, raw labor, human capital, and investment rates were available for every year of the MRW sample period, 1960-1985. The table below provides a list of these nations along with the 1960-1985 average value of relevant variables for each country. An asterisk (*) denotes the 51 nations included in the sample used to carry out the second experiment.

Mean values of relevant variables for 79 countries

Country	GDP per worker (bill. US\$)	Capital per worker (bill. US\$)	Educational Attainment (years)	Investment over GDP (%)
Algeria*	9590.3	19927.6	2.40	21.81
Argentina*	14514.6	25128.8	6.30	17.09
Australia*	24598.2	73327.1	6.48	29.05
Austria*	18550.5	45706.7	8.71	25.81
Bangladesh	3455.2	1698.0	2.52	4.51
Belgium*	22559.7	58855.3	7.84	24.15
Bolivia*	5131.9	9916.2	4.14	18.77
Brazil*	8571.2	14648.2	3.04	19.88
Cameroon	2116.8	1165.5	1.58	7.78
Canada*	25663.6	60720.3	8.91	23.31
Chile*	10404.8	21791.6	5.98	18.69
China	1378.9	2877.9	3.22	19.61
Colombia*	7657.8	12274.0	3.43	16.10
Costa Rica*	9195.0	5566.6	6.01	15.65
Cyprus*	9114.0	25260.0	6.85	27.97
Denmark*	19857.8	54802.1	8.31	26.37
Ecuador*	7451.9	14550.8	4.11	22.93
Egypt	4643.7	1699.1	3.51	4.57
El Salvador	5627.3	1821.6	3.43	8.45
Ethiopia	647.9	290.8	0.23	4.95
Finland*	17654.8	61188.7	8.08	35.38
France*	21948.0	58143.7	7.98	27.47
Germany*	21868.3	48559.8	8.43	28.57
Ghana	2329.7	1901.5	2.86	6.34
Greece*	11610.7	26284.0	7.68	25.99
Guatemala*	7117.2	6729.0	2.66	9.40
Haiti	1861.3	792.7	1.85	4.97
Honduras*	4257.4	5934.4	3.16	14.16
Iceland*	17861.0	48412.5	7.46	29.60
India	2056.9	2587.4	2.28	13.63
Indonesia	2504.2	2496.9	2.81	14.64
Israel*	17082.7	39880.0	4.50	27.55
Italy*	20119.9	55748.5	6.89	28.71
Ivory Coast	3429.1	2051.2	0.84	12.07
Jamaica*	5866.5	16367.1	6.80	22.97
Japan*	12085.7	31960.9	10.64	33.93
Jordan*	9771.7	10174.4	2.97	14.12
Kenya	1760.3	3615.8	2.36	16.32
Korea. Rep*	5766.5	5231.2	4.93	21.44

Note: * denotes the 51 nations included in the sample used to carry out the second experiment.

Mean values of relevant variables for 79 countries, cont.

Country	GDP per worker (bill. US\$)	Capital per worker (bill. US\$)	Educational Attainment (years)	Investment over GDP (%)
Madagascar	1706.8	344.04	3.15	1.14
Malawi	1129.2	1332.74	3.32	8.16
Malaysia*	10581.6	22547.62	5.77	29.54
Mali	1609.8	1007.26	0.96	5.84
Mauritius*	7338.8	8191.28	6.37	8.36
Mexico*	16929.0	29987.27	5.46	14.92
Morocco	6379.8	6724.14	2.14	9.98
Mozambique	1541.0	443.78	2.20	1.36
Myanmar	1276.8	1145.10	2.36	8.94
Netherlands*	28218.4	78868.48	8.25	20.40
New Zealand*	39480.7	39480.79	8.38	24.44
Nigeria	3036.2	4988.88	2.00	9.88
Norway*	27407.2	89938.15	9.29	28.68
Pakistan	4075.2	3622.92	1.94	10.16
Panama*	10140.8	21008.28	7.01	16.76
Paraguay*	6451.4	9543.62	5.70	16.40
Peru*	8605.0	18792.87	6.12	16.90
Philippines*	4678.4	8643.77	7.33	16.02
Portugal*	11464.4	28693.64	5.34	21.02
Rwanda	1567.2	561.09	2.64	6.12
Senegal	2638.8	1640.40	1.75	3.56
Sierra Leone	991.6	174.71	1.92	1.38
Singapore*	17883.6	48914.37	6.77	38.80
Spain*	21162.8	59324.44	6.79	21.84
Sri Lanka	1943.2	2363.75	6.01	12.40
Sudan	2605.6	3923.26	1.57	13.40
Sweden*	25875.4	70883.61	9.63	19.66
Switzerland*	29446.0	101275.38	6.73	28.60
Tanzania	967.4	1097.57	2.02	10.80
Thailand*	4657.4	6973.21	5.45	16.74
Tunisia*	8629.6	11304.46	4.48	13.36
Turkey*	7009.6	15438.82	4.22	22.14
Uganda	1637.6	431.07	2.39	1.82
U.K.*	22472.8	47706.21	9.94	16.60
U.S.*	32684.6	83918.58	11.35	21.14
Uruguay*	10773.0	24664.08	7.53	12.84
Venezuela*	19210.6	47992.71	6.02	15.48
Zaire	1171.6	721.89	3.67	5.60
Zambia*	2493.6	8950.54	4.06	9.52
Zimbabwe*	3271.0	6270.08	4.36	12.34

Note: * denotes the 51 nations included in the sample used to carry out the second experiment.

References

- Attanasio, O. and Weber, G., "Consumption, the Interest Rate and Aggregation," *Review of Economic Studies*, 60:631-649, 1993.
- Barro, R.J. and Lee, J., "International Data on Educational Attainment: Updates and Implications," *working paper no. 42*, Center for International Development at Harvard University, April 2000.
- Barro, R. and Sala-i-Martin, M., *Economic Growth*, McGraw Hill, 1995.
- Benhabib, J. and Spiegel, M., "The Role of Human Capital in Economic Development: Evidence from Cross-Country Data," *Journal of Monetary Economics*, 34:143-173, 1994.
- Bils, M. and Klenow, P., "Does Schooling Cause Growth?" *American economic Review*, 90:1160-1183, 2000.
- Chari, V.V., Kehoe, P. and McGrattan, E., "The Poverty of Nations: A Quantitative Exploration," *Federal Reserve of Minneapolis Staff Report no. 204*, 1997.
- Christiano, L., "Understanding Japan's Saving Rate: The Reconstruction Hypothesis," *Federal Reserve of Minneapolis Quarterly Review*, 2:10-29, 1989.
- Coe, D., Helpman, E. and Hoffmaister A., "North-South R&D Spillovers," *Economic Journal* 107:134-49, 1997.
- Dinopoulos, E., and Thompson, P., "Schumpeterian Growth Without Scale Effects," *Journal of Economic Growth*, 3:313-335, 1998.
- Dinopoulos, E., and Thompson, P., "Endogenous Growth in a Cross-Section of Countries," *Journal of International Economics*, 51:335-362, 2000.
- Eicher, T., and Turnovsky, S., "A Generalized Model of Economic Growth," *Economic Journal*, 109:394-415, 1999a.
- Eicher, T., and Turnovsky, S., "Convergence in a Two-Sector Non-Scale Growth Model," *Journal of Economic Growth*, 4:413-429, 1999b.
- Eicher, T., and Turnovsky, S., "Transition Dynamics in Non-Scale Models," *Journal of Economic Dynamics and Control*, 25:85-113, 2001.
- Findlay, R., "Relative Backwardness, Direct Foreign Investment and the Transfer of Technology: A Simple Dynamic Model," *Quarterly Journal of Economics*, 92:1-16, 1978.
- Griliches, Z, "Productivity Puzzles and R&D: Another Nonexplanation," *Journal of Economic Perspectives*, 2:9-21, 1988.
- Guvonen, M.F., "Reconciling Conflicting Evidence on The Elasticity of Intertemporal Substitution: A Macroeconomic Perspective," *working paper*, University of Rochester, 2002.
- Hall, R., "Intertemporal Substitution in Consumption," *Journal of Political Economy*, 96:339-357, 1988.
- Howitt, P., "Endogenous Growth and Cross-Country Income Differences," *American Economic Review* 90:829-46, 2000.
- Jones, C., "R&D-Based Models of Economic Growth," *Journal of Political Economy*, 103:759-784, 1995.
- Jones, C., "Convergence Revisited," *Journal of Economic Growth*, 2:131-153, 1997.

- Jones, C., "Sources of U.S. Economic Growth in a World of Ideas," *American Economic Review*, 92:220-239, 2002.
- Jones, C.I. and Williams, J., "Too Much of a Good Thing: The Economics of Investment in R&D," *Journal of Economic Growth*, 5:65-85, 2000.
- Judd, K., "Projections Methods for Solving Aggregate Growth Models," *Journal of Economic Theory*, 58:410-452, 1992.
- King, R. and Rebelo, S., "Transitional Dynamics and Economic Growth in the Neoclassical Model," *American Economic Review*, 83:908-931, 1993.
- Kortum, S., "Equilibrium R&D and the Decline in the Patent-R&D Ratio; U.S. Evidence," *American Economic Review: Papers and Proceedings*, 83:450-457, 1993.
- Krueger, A. and Lindahl, M., "Education for Growth: Why and for Whom?" *Journal of Economic Literature*, 39:1101-1136, 2001.
- Lloyd-Ellis, H. and Roberts, J., "Twin Engines of Growth: Skills and Technology as Equal Partners in Balanced Growth," *Journal of Economic Growth*, 7:87-115, 2002.
- Mankiw, G., Romer, D. and Weil, D., "A Contribution to the Empirics of Economic Growth," *Quarterly Journal of Economics*, 107:407-437, 1992.
- Mincer, J., *Schooling, Experience and Earnings*, Columbia University Press, 1974.
- Nelson, R. and Phelps, E., "Investment in Humans, Technological Diffusion, and Economic Growth," *American Economic Review*, 56:69-83, 1966.
- Nehru, V., Swanson, E. and Dubey, A., "A New Database on Human Capital Stocks in Developing and Industrial Countries: Sources, Methodology and Results," *Journal of Development Economics*, 46:379-401, 1995.
- Nonneman, W. and Vanhoudt, P., "A Further Augmentation of the Solow Model and the Empirics of Economic Growth for OECD Countries," *Quarterly Journal of Economics*, 111:943-953, 1996.
- Parente, S.L. and Prescott, E.C., "Barriers to Technology Adoption and Development," *Journal of Political Economy*, 102:298-321, 1994.
- Perez-Sebastian, F., "Transitional Dynamics in an R&D-Based Growth Model with Imitation: Comparing its Predictions to the Data," *Journal of Monetary Economics*, 42:437-461, 2000.
- Psacharopoulos, G., "Returns to Investment in Education: A Global Update," *World Development*, 22:1325-1343, 1994.
- Sala-i-Martin, X. "The Classical Approach to Convergence Analysis," *Economic Journal*, 106:1019-1036, 1996.
- Santos, M., "Accuracy of Numerical Solutions Using the Euler Equation Residuals," *Econometrica*, 68:1377-1402, 2000.
- Summer, R. and Heston, A., "The Penn World Table (Mark 5): An Expanded Set of International Comparisons: 1950-1988," *Quarterly Journal of Economics*, 106:327-368, 1991.